

Contents

Guidelines / Requirements.....	2
Current List of Asset Types Cityworks / GIS for Capital Programs and Buildings.....	2
Designer -> GIS -> Asset Group: Features.....	2
Designer -> GIS -> Asset Group: Objects.....	2
APPLIANCES.....	2
BAYS.....	3
GENERATORS.....	3
Changes Needed to this Asset Group.....	3
HVAC.....	3
Changes Needed to this Asset Group.....	4
PUMPS.....	4
Changes Needed to this Asset Group.....	5
SAFETY.....	5
Changes Needed to this Asset Group.....	5
SEPTIC.....	5
Changes Needed to this Asset Group.....	5
New Asset Groups.....	5
BUILDING COMPONENT.....	5
Attributes for This New Asset Group.....	5
FIRE SYSTEM.....	6
Attributes for This New Asset Group.....	6
Stormwater / BMPs.....	6

Guidelines / Requirements

Brian is only planning to put assets into Cityworks worth over \$5000.

It will take several months to collect HVAC data and complete Roof inventory get HVAC and roofs worked out. These two items are Brian main priority to start

What to do with Existing Data?

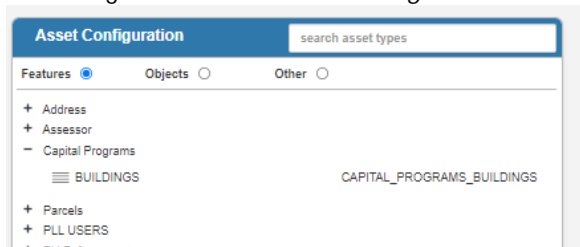
If possible / less work, please retain existing data when adding new attributes on existing asset groups. However, if it is easier, just delete them all, then I will re-enter. If you are able to retain them, please set defaults for new attributes as listed below in table.

Asset Group	Rows in Database	New Attribute	Set to Default
HVAC	19	HVAC Asset Sub-Type	Roof Top Unit
GENERATORS	10	Owned / Leased	<i>Blank / Null</i>
PUMPS	7	Asset Sub-Type	Circulating Pump
SAFETY	8	N/A	N/A
SEPTIC	0	N/A	N/A

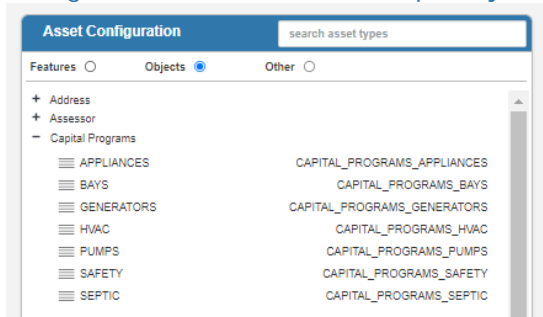
Current List of Asset Types Cityworks / GIS for Capital Programs and Buildings

Designer -> GIS -> Asset Group: Features

No changes are needed to *Buildings*.



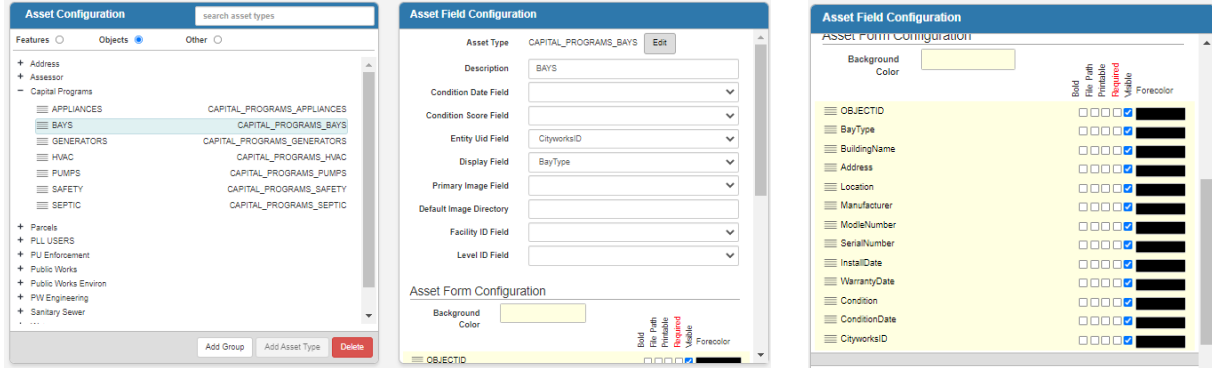
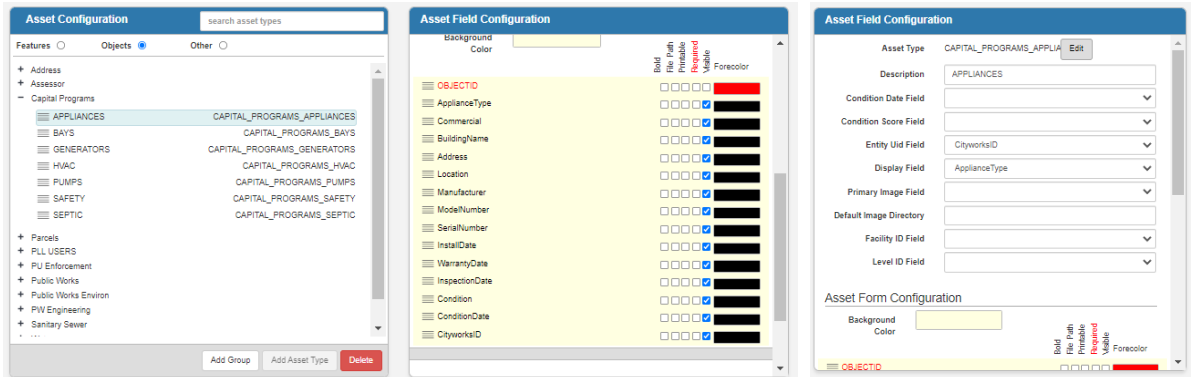
Designer -> GIS -> Asset Group: Objects



The sections below list what Brian wishes to do with each of the above groups (delete, keep, change name, add new).

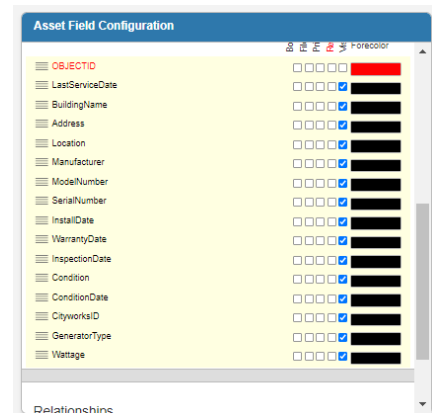
APPLIANCES

Delete this asset group, including any data rows.



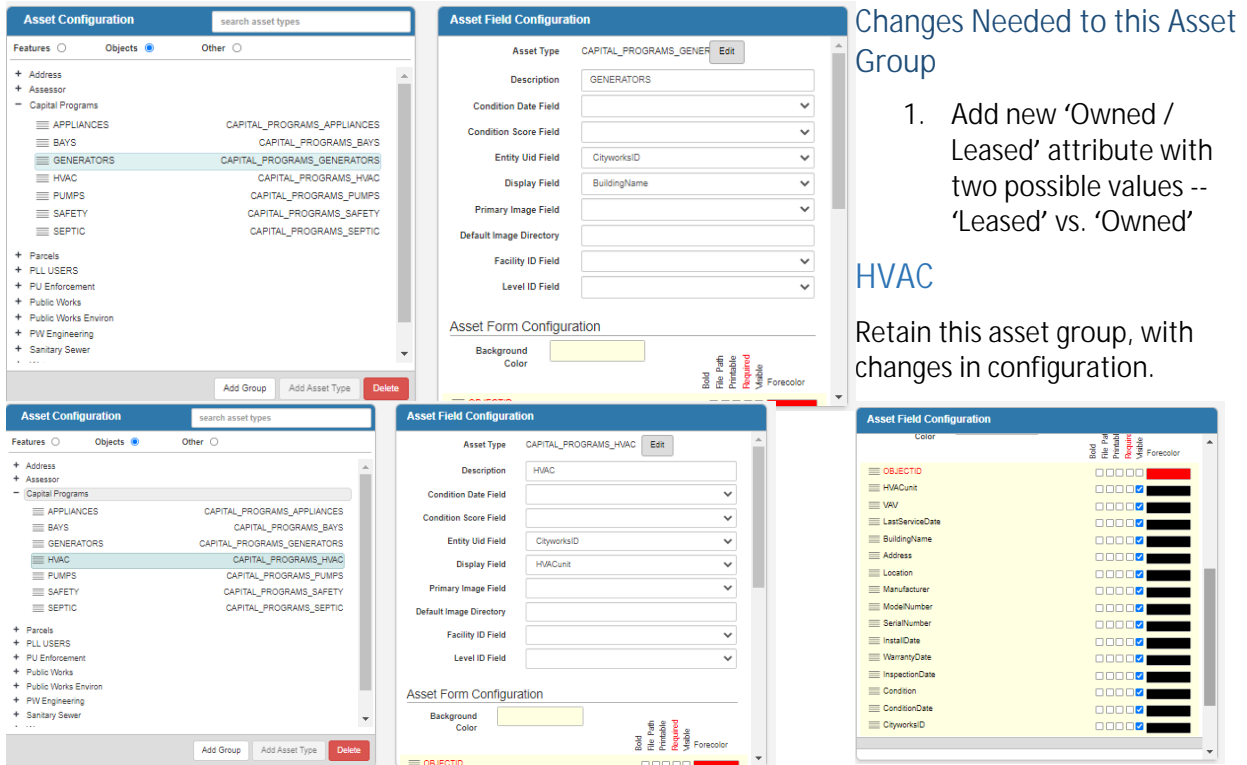
BAYS

Delete this asset group, including any data rows.



GENERATORS

Retain this asset group, with changes in configuration.



Changes Needed to this Asset Group

1. Add new 'Owned / Leased' attribute with two possible values -- 'Leased' vs. 'Owned'

HVAC

Retain this asset group, with changes in configuration.

Changes Needed to this Asset Group

Add new Asset Sub-Type attribute, a validated list:

- Roof Top Unit
- Air Handler
- Ice Maker
- Exhaust Fans
- Motors"
- VAVS
- Boiler
- Other
- Pump-Chilled Water
- Pump-Circulating
- Pump-Hot Water
- Mini-Split System
- Package Unit-Gas
- Package Unit-Electric
- Split-System-Gas
- Split-System-Electric
- Geo Thermal
- Chiller-Closed Loop

List of Current Assets

OBJECTID	HVACUnit	VAV	LastServiceDate	BuildingName	Address	Location	Manufacturer	ModelNumber	SerialNumber	InstalDate	WarrantyDate	InspectionDate	Condition
1	RTU-1	34		Municipal Center	442 W WASHINGTON ST	Roof Area B	Trane	SMHJF7540LS40L66C	C13J05577	1/1/2014 12:00:00 AM	1/1/2017 12:00:00 AM		GOOD
2	RTU-2	38		Municipal Center	442 W WASHINGTON ST	Roof Area B	Trane	SMHJF7540LS6CJF69	C13J05578	1/1/2014 12:00:00 AM	1/1/2017 12:00:00 AM		GOOD
3	RTU-3			Municipal Center	442 W WASHINGTON ST	Roof Area B	Valent (CC)	VPRE-210-13C-25E-C	13441800	1/1/2014 12:00:00 AM	1/1/2017 12:00:00 AM		GOOD
4	RTU-4	17		Municipal Center	442 W WASHINGTON ST	Roof Area A	Trane	SMHJF3040L38CHUE9	C13J05579	1/1/2014 12:00:00 AM	1/1/2017 12:00:00 AM		GOOD
5	IT-RTU-1	1		Municipal Center	442 W WASHINGTON ST	Roof Area A	Liebert	TCSV80K-A	C13L2F9485	1/1/2014 12:00:00 AM	1/1/2017 12:00:00 AM		GOOD
6	IT-RTU-2	1		Municipal Center	442 W WASHINGTON ST	Roof Area A	Liebert	TCSV80K-A	C13L2F9482	1/1/2014 12:00:00 AM	1/1/2017 12:00:00 AM		GOOD
7	IT-RTU-3	1		Municipal Center	442 W WASHINGTON ST	Roof Area A	Liebert	TCSV80K-A	C13L2F9487	1/1/2014 12:00:00 AM	1/1/2017 12:00:00 AM		GOOD
8	IT-RTU-4	1		Municipal Center	442 W WASHINGTON ST	Roof Area A	Liebert	TCSV80K-A	C13L2F9486	1/1/2014 12:00:00 AM	1/1/2017 12:00:00 AM		GOOD
9	CAB UNIT HEATER	1		Municipal Center	442 W WASHINGTON ST	1039	Trane			1/1/2014 12:00:00 AM	1/1/2017 12:00:00 AM		GOOD
10	CAB UNIT HEATER	1		Municipal Center	442 W WASHINGTON ST	1112	Trane			1/1/2014 12:00:00 AM	1/1/2017 12:00:00 AM		GOOD
11	CAB UNIT HEATER	1		Municipal Center	442 W WASHINGTON ST	1113	Trane			1/1/2014 12:00:00 AM	1/1/2017 12:00:00 AM		GOOD
12	CAB UNIT HEATER	1		Municipal Center	442 W WASHINGTON ST	1131	Trane			1/1/2014 12:00:00 AM	1/1/2017 12:00:00 AM		GOOD
13	CAB UNIT HEATER	1		Municipal Center	442 W WASHINGTON ST	1132	Trane			1/1/2014 12:00:00 AM	1/1/2017 12:00:00 AM		GOOD
14	CAB UNIT HEATER	1		Municipal Center	442 W WASHINGTON ST	1137	Trane			1/1/2014 12:00:00 AM	1/1/2017 12:00:00 AM		GOOD
15	CAB UNIT HEATER	1		Municipal Center	442 W WASHINGTON ST	1141	Trane			1/1/2014 12:00:00 AM	1/1/2017 12:00:00 AM		GOOD
16	CAB UNIT HEATER	1		Municipal Center	442 W WASHINGTON ST	1154	Trane			1/1/2014 12:00:00 AM	1/1/2017 12:00:00 AM		GOOD
17	CAB UNIT HEATER	1		Municipal Center	442 W WASHINGTON ST	1167	Trane			1/1/2014 12:00:00 AM	1/1/2017 12:00:00 AM		GOOD
18	RTU-1	TB 1 through 27		Police Headquarters Admin	111 HENLEY PL	East Roof	Trane (40 Tons)	Intelpak SEHFF40EH43E5	C08H0656	4/1/2009 12:00:00 AM	7/9/2009 12:00:00 AM		GOOD
19	RTU-1			Municipal Center									GOOD

PUMPS

Retain this asset group, with changes in configuration.

The image shows three screenshots from a software interface. The first screenshot, 'Asset Configuration', shows a tree view with 'PUMPS' selected under 'Capital Programs'. The second screenshot, 'Asset Field Configuration', shows a list of fields with checkboxes for selection, including OBJECTID, PumpType, LastServiceDate, BuildingName, Address, Location, Manufacturer, ModelNumber, SerialNumber, InstalDate, WarrantyDate, InspectionDate, Condition, ConditionDate, and CityworksID. The third screenshot, 'Asset Field Configuration', shows the configuration for the 'PUMPS' asset type, with fields like Description, Condition Date Field, Condition Score Field, Entity Uid Field, Display Field, Primary Image Field, Default Image Directory, Facility ID Field, and Level ID Field.

Changes Needed to this Asset Group

1. Change asset group name to "PLUMBING".
2. Add 'Asset Sub-Type' attribute; a validated list (Water Heaters, Circulating Pumps, Domestic Water Backflow, Sprinkler Backflow)

SAFETY

Retain this asset group, with changes in configuration.

The image shows three screenshots from a software interface. The first screenshot, 'Asset Configuration', shows a tree view with 'SAFETY' selected under 'Capital Programs'. The second screenshot, 'Asset Field Configuration', shows the configuration for the 'SAFETY' asset type, with fields like Description, Condition Date Field, Condition Score Field, Entity Uid Field, Display Field, Primary Image Field, Default Image Directory, Facility ID Field, and Level ID Field. The third screenshot, 'Asset Field Configuration', shows a list of fields with checkboxes for selection, including OBJECTID, SafeSystemType, ServiceVendor, LastServiceDate, BuildingName, Address, Location, Manufacturer, ModelNumber, SerialNumber, InstalDate, WarrantyDate, InspectionDate, Condition, ConditionDate, and CityworksID.

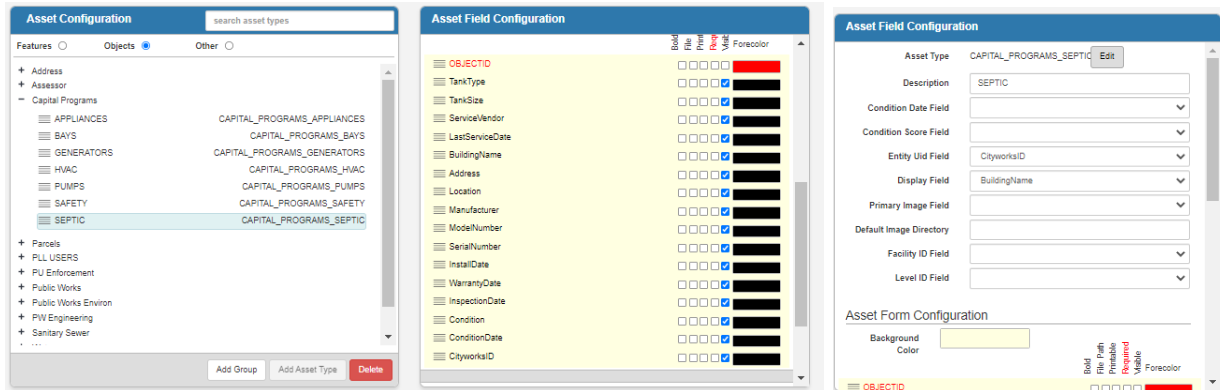
Changes Needed to this Asset Group

1. Change Group Name to "SECURITY"

2. Add values for “Safe System Type” attribute (Cameras, Recorders, Servers, Cloud, Other)

SEPTIC

Retain this asset group, with changes in configuration.



Changes Needed to this
Asset Group

1. Add attributes Asset Sub-Type: Septic System, Chopper Pump, Other

New Asset Groups

BUILDING COMPONENT

Attributes for This New Asset Group

1. ObjectID
2. BuildingName
3. Asset Sub-Type: validated list (Roof, Window, Emergency Lighting, Window , Elevator, Detention Locks, Automatic Doors Other)
4. Primary Material: validated list (Metal, Flat Tar, Rubber, Synthetic Membrane, Other)
5. Manufacturer - text
6. Installed By - text
7. Warranty Info - text
8. Color - text
9. Size (Sq Ft) - Number
10. Year Installed – Number / Text
11. Description – text
12. Condition – text
13. Condition Date - Date
14. Access Method – text
15. CityworksID

FIRE SYSTEM

Attributes for This New Asset Group

1. ObjectID
2. BuildingName
3. Asset Sub-Type: validated list (Chemical Suppression, Wet Sprinkler, Dry Sprinkler, Smoke, Hoods)
4. Manufacturer – text
5. Model Number – text

6. Serial Number - text
7. Installed By - text
8. Warranty Info - text
9. Color - text
10. Year Installed – Number / Text
11. Description – text
12. CityworksID

Stormwater / BMPs

There are 5 or 6 City-owned Stormwater structures that CP cleans and inspects. They are already in GIS as PW assets. CP is responsible for maintaining them. But PW has a regulatory inspection requirement. I will separately address about how to have both domains have access to create WOs and Inspections on same asset.